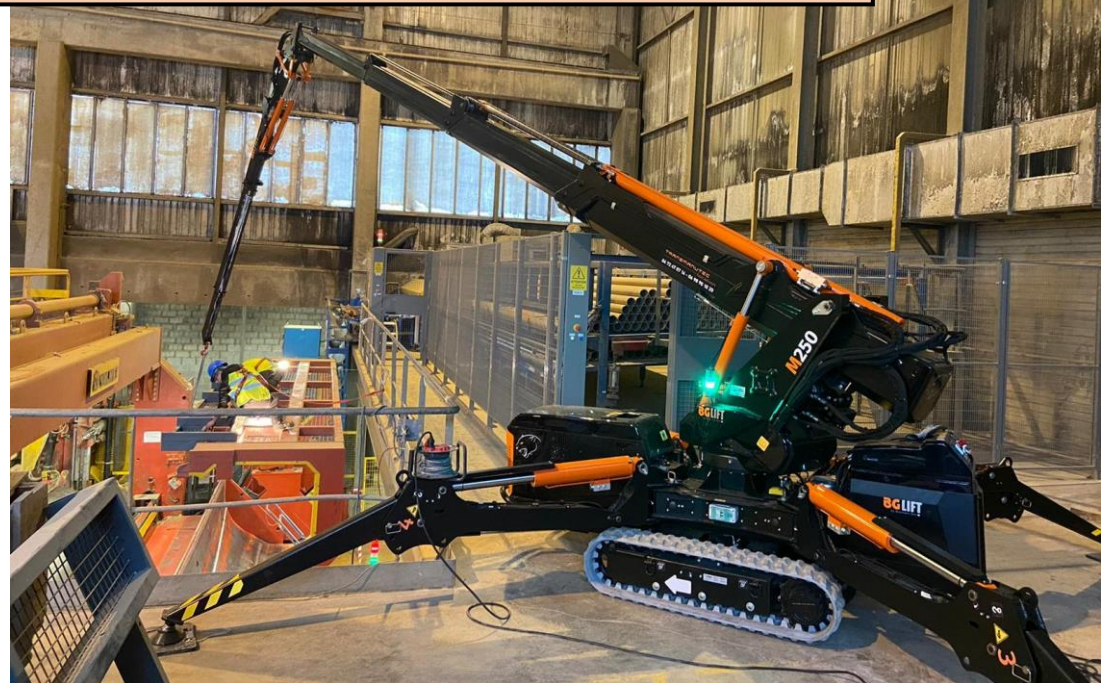
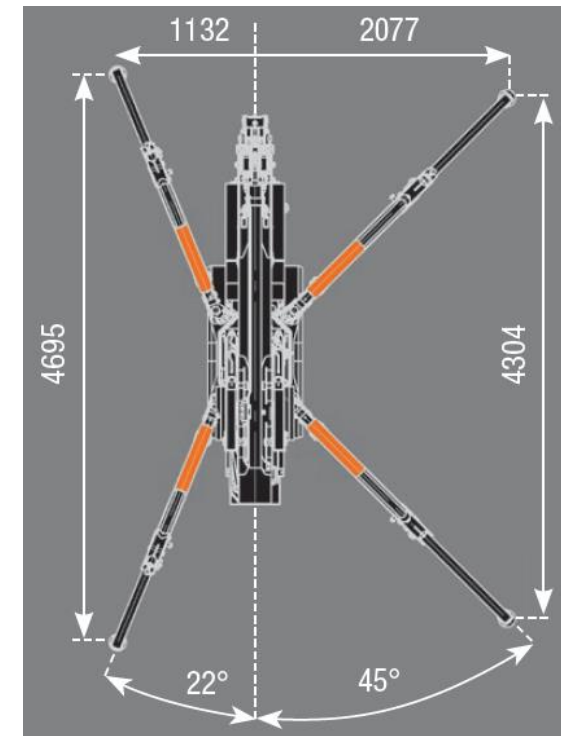
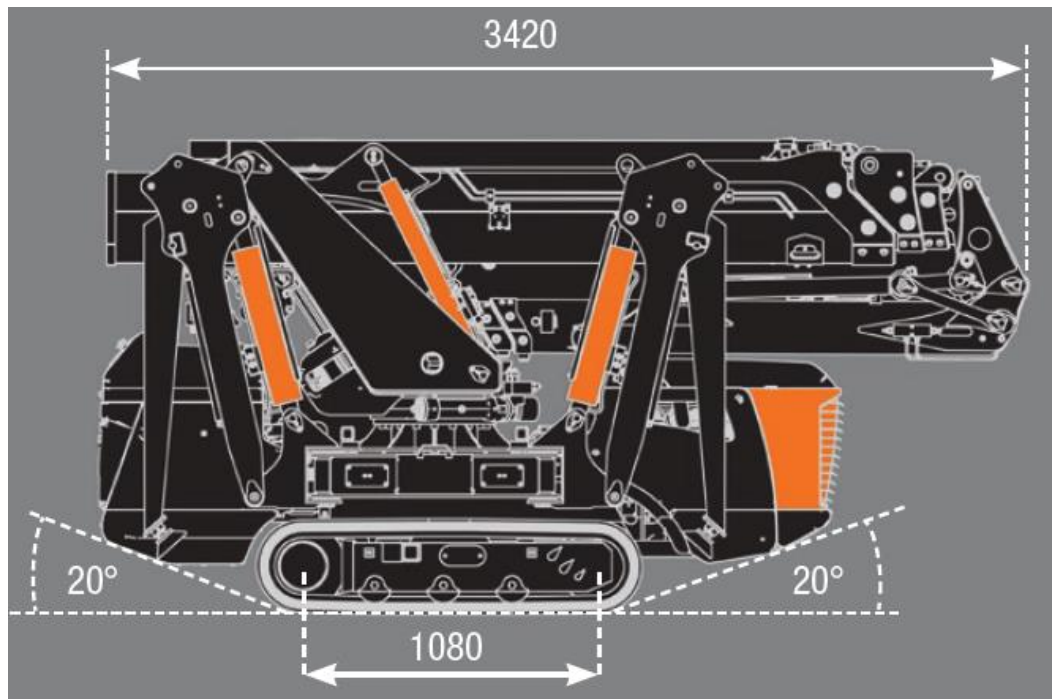
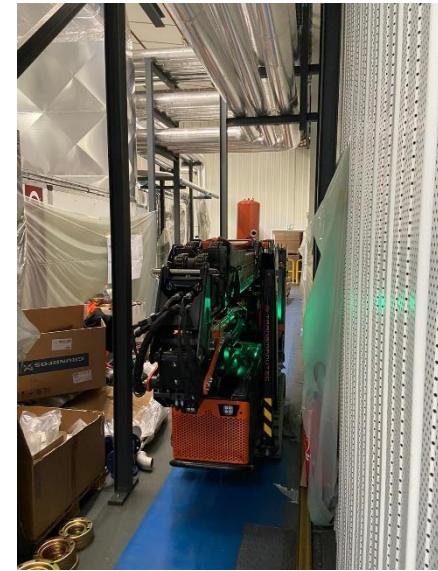
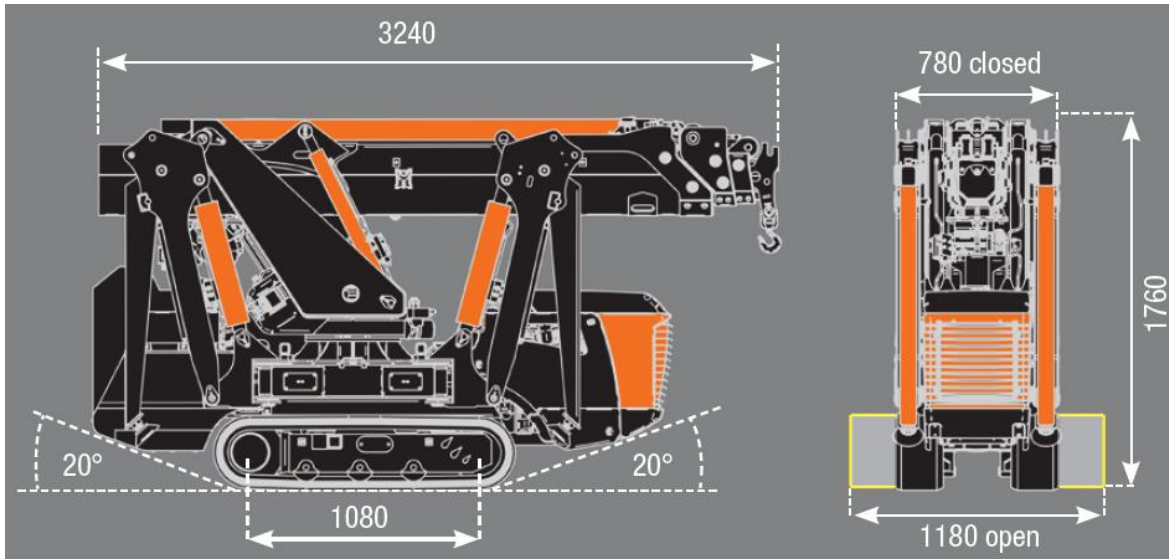
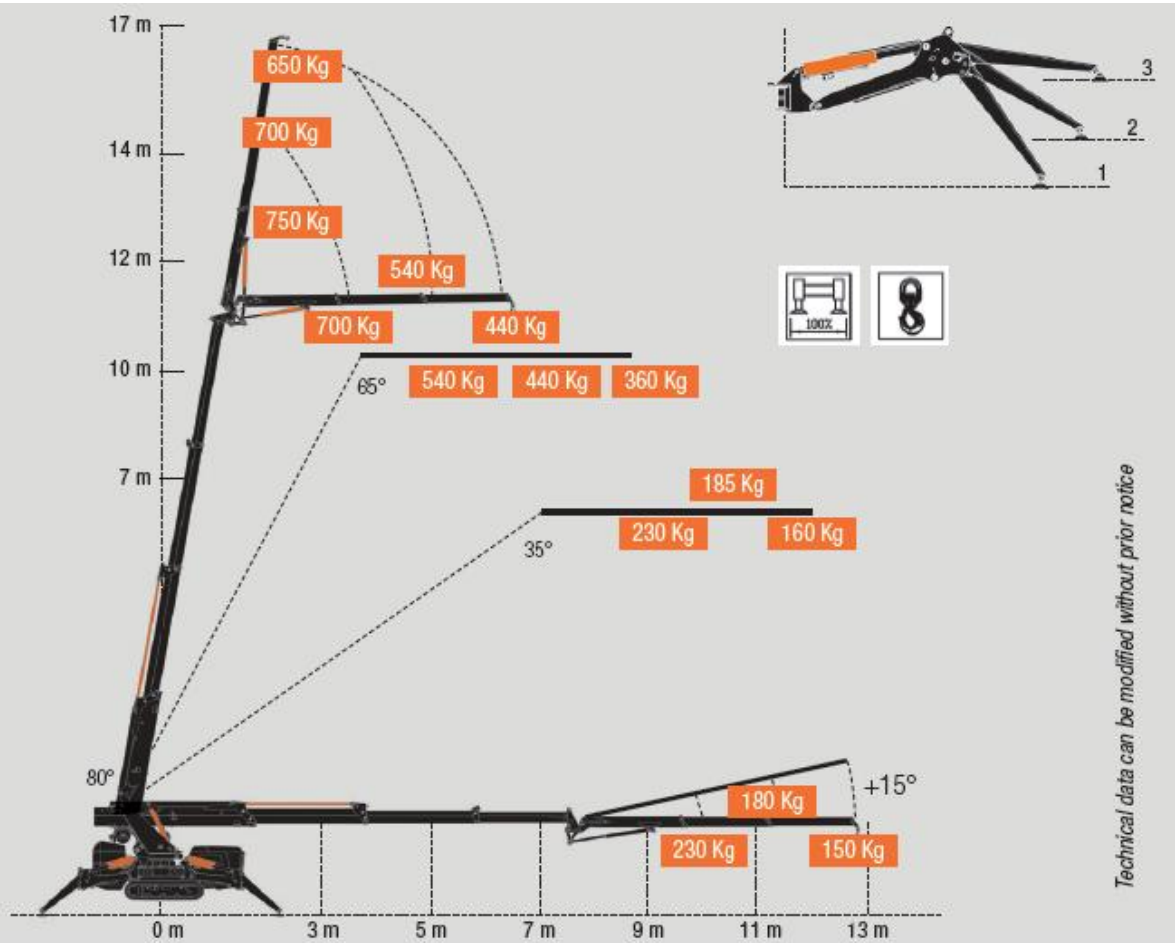
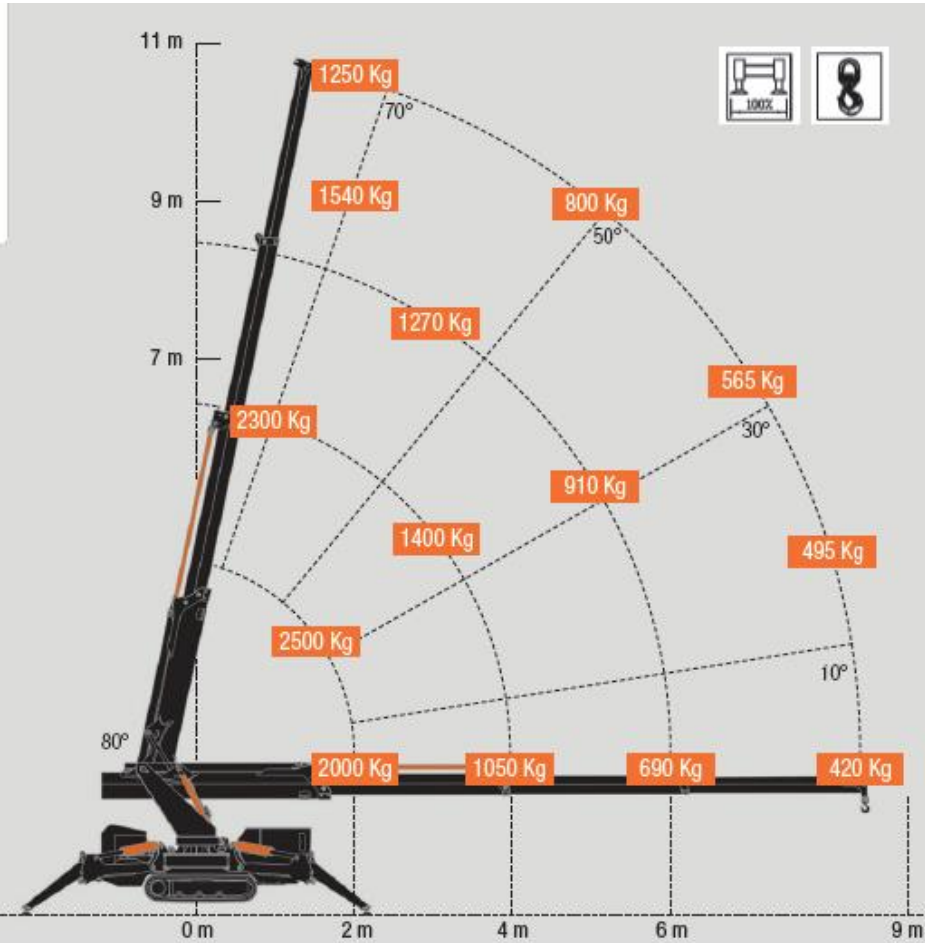











FICHE TECHNIQUE Mini Grue 250











Technical data can be modified without prior notice

	Max capacity Capacité Maxi Carga máxima de la grúa	2500 Kg / 1,5 m
	Max outreach Portée Maxi Radio máximo de trabajos	8,43 m
	Max outreach with Jib (optional) Portée Maxi avec Jib (en option) Radio máximo de trabajo con pluma hidráulica (opcional)	12,85 m
	Max hook height Hauteur Maxi sous crochet Altura máxima del brazo	10,40 m
	Max hook height with Jib (optional) Hauteur Maxi sous Crochet avec Jib (en option) Altura máxima con pluma hidráulica (opcional)	15,90 m
	Slewing angle-speed Rotation-Vitesse Ángulo de rotación-Velocidad	Continuous / 1,5 rpm Continue / 1,5 tour/min Continua / 1,5 rpm
	Winch (optional) Treuil (en option) Cabrestante (opcional)	First layer pull / Capacité sur 1 brin de câble / Tiro directo Rope lenght / Longueur de Câble / Longitud del cable Speed in direct pull / Vitesse avec 1 Brin de câble / Velocidad de tiro directo
	Radio remote control Radiocommande Radiomando	Scanreco Can-Bus + Display
	Stability control Limiteur de Charge (CEC) Limitador de carga	Electronic Electronique Electrónico

	Stability system Stabilisation Estabilización	24 different position 24 positions différentes 24 posiciones	Encombremet max 4155x4300mm
	Weights Poids des éléments Peso de los elementos	Standard crane / Grue standard / Grúa estándar Jib Electric engine / Motorisation électrique / Motor eléctrico Winch / Treuil / Cabrestante	2250 Kg 210 Kg 40 Kg 65 Kg
	Crawler Crane Traction Traction sur Chenilles Tracción del carro sobre orugas	Trasmission / Transmission / Transmisión Scope / Débit / Capacidad Pressure / Pression / Presión Speed / Vitesse / Velocidad Max slope degree / Pente Maxi / Pendencia máxima Max pressure on the ground / Pression Maxi au sol / Precio en el suelo	Moto-réducteur / Moto-réducteur Epicycloidal / Reductor epicicloidal 50 l / min 170 bar 0 - 2 Km / h 25° 0,47 Kg / cm ²
	Diesel Engine Moteur Diesel Motor diésel	Brand / Marque / Marca Model / Type / Modelo Max power / Puissance Maxi / Potencia máxima Max torque / Couple maxi / Par máximo Tank capacity / Capacité Réservoir / Capacidad del depósito	Yanmar 3TNV70 16.3 kw / 22.2 Hp 48 Nm 13 l

